



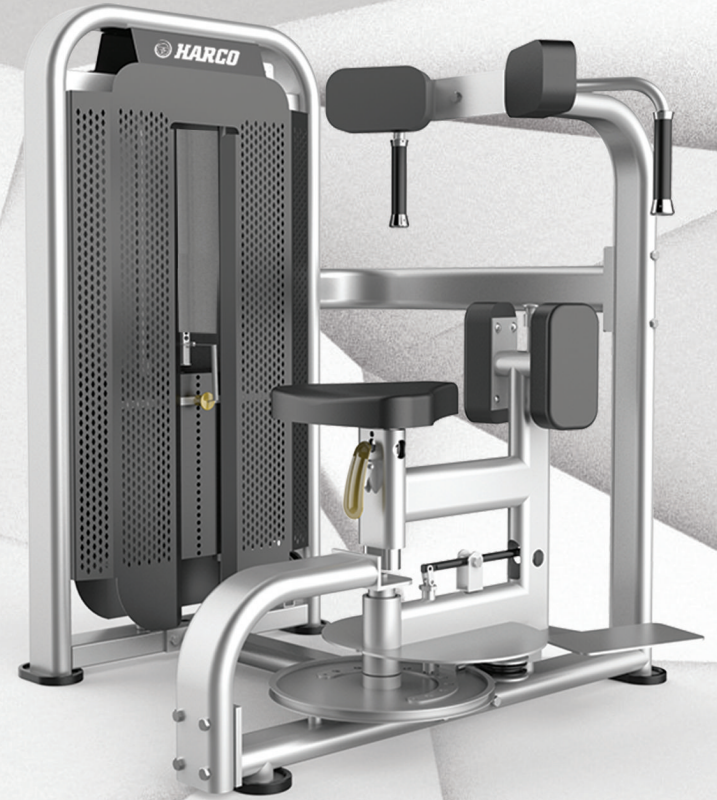
 **HARCO**

**STRENGTH**  
**BLAZE - SERIES**  
**PINS-SELECTED**



Torso Rotary

Triceps Press



**BLAZE  
CATALOGUE**

**SRDT-1601****Vertical Chest Press**

Assembly size : 1245\*1200\*1500mm

Weight : 221kg

Weight stack : 100kg

**SRDT-1602****Seated Chest Press**

Assembly size : 1400\*1410\*1830mm

Weight : 226kg

Weight stack : 100kg

**SRDT-1603****Pectoral Fly**

Assembly size : 1380\*1080\*1500mm

Weight : 226kg

Weight stack : 100kg

**SRDT-1604****Pec Fly+Rear Delt**

Assembly size : 1460\*1180\*2100mm

Weight : 223kg

Weight stack : 100kg

**SRDT-1605****Vertical Row**

Assembly size : 1200\*1300\*1500mm

Weight : 237kg

Weight stack : 100kg

**SRDT-1606****Shoulder Press**

Assembly size : 1350\*1480\*1500mm

Weight : 242kg

Weight stack : 100kg

**SRDT-1607**

Lat Pulldown

Assembly size : 1430\*1350\*1910mm

Weight : 230kg

Weight stack : 100kg

**SRDT-1608**

Lat Pulldown+Vertical Row

Assembly size : 2040\*1420\*2250mm

Weight : 222kg

Weight stack : 100kg

**SRDT-1609**

Upper Limbs

Assembly size : 1450\*1350\*2320mm

Weight : 252kg

Weight stack : 100kg

**SRDT-1610**

Long Pull

Assembly size : 1450\*1120\*1720mm

Weight : 180kg

Weight stack : 100kg

**SRDT-1611**

Arm Curl

Assembly size : 1500\*1100\*1500mm

Weight : 205kg

Weight stack : 100kg

**SRDT-1612**

Arm Extension

Assembly size : 1500\*1100\*1500mm

Weight : 205kg

Weight stack : 100kg

**SRDT-1613****Triceps Press**

Assembly size : 1560\*1100\*1500mm

Weight : 220kg

Weight stack : 100kg

**SRDT-1614****Lateral Raise**

Assembly size : 1180\*920\*1500mm

Weight : 222kg

Weight stack : 100kg

**SRDT-1615****Torso Rotary**

Assembly size : 1180\*920\*1500mm

Weight : 268kg

Weight stack : 100kg

**SRDT-1616****Abdominal Machine**

Assembly size : 1500\*1050\*1500mm

Weight : 228kg

Weight stack : 100kg

**SRDT-1617****Back Extension**

Assembly size : 1400\*1050\*1500mm

Weight : 230kg

Weight stack : 100kg

**SRDT-1618****Abdominal Crunch**

Assembly size : 1350\*1000\*1500mm

Weight : 228kg

Weight stack : 100kg

**SRDT-1619**

## Seated Leg Curl

Assembly size : 1700\*1080\*1500mm

Weight : 240kg

Weight stack : 100kg

**SRDT-1620**

## Prone Leg Curl

Assembly size : 1810\*1080\*1500mm

Weight : 218kg

Weight stack : 100kg

**SRDT-1621**

## Leg Extension

Assembly size : 1450\*1080\*1500mm

Weight : 218kg

Weight stack : 100kg

**SRDT-1623**

## Total Hip

Assembly size : 1350\*1180\*1500mm

Weight : 215kg

Weight stack : 100kg

**SRDT-1624**

## Leg Press

Assembly size : 2240\*1090\*1500mm

Weight : 243kg

Weight stack : 100kg

**SRDT-1625**

## Glute Machine

Assembly size : 1106\*1102\*1720mm

Weight : 223kg

Weight stack : 100kg

**SRDT-1690****Biceps+Triceps**

Assembly size : 1240\*1150\*1500mm

Weight : 213kg

Weight stack : 100kg

**SRDT-1692****Leg Curl+Leg Extension**

Assembly size : 1450\*1120\*1500mm

Weight : 223kg

Weight stack : 100kg

**SRDT-1693****Abductor+Adductor**

Assembly size : 1590\*780\*1500mm

Weight : 205kg

Weight stack : 100kg

**SRDT-1694****Multi+Press**

Assembly size : 1980\*1320\*1500mm

Weight : 222kg

Weight stack : 100kg

**SRDT-1695****Abdominal Crunch+Back Extension**

Assembly size : 1350\*1000\*1500mm

Weight : 212kg

Weight stack : 100kg

**SRDT-1696****Prone Leg Curl+Leg Extension**

Assembly size : 1650\*1050\*1500mm

Weight : 228kg

Weight stack : 100kg

Contact:

(+91) 88704 55075,

(+91) 88704 51515.



Address :

3/289-N, Thattagadu Thottam, Paruvai,  
Coimbatore, Tamilnadu - 641 658.

fitnessfactorycbe@gmail.com

www.harcoindia.in



WEBSITE



WHATSAPP

2024